

• General Description

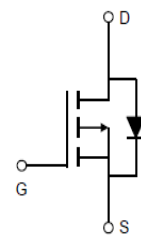
The ZM060P02D combines advanced trench MOSFET technology with a low resistance package to provide extremely low $R_{DS(ON)}$.

• Features

- Advance high cell density Trench technology
- Low $R_{DS(ON)}$ to minimize conductive loss
- Low Gate Charge for fast switching
- Low Thermal resistance

• Application

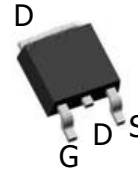
- Load Switches
- DC/DC
- BLDC Motor driver

• Product Summary


$V_{DS} = -20V$

$R_{DS(ON)} = 7.0m\Omega$

$I_D = -60A$



TO-252

• Ordering Information:

Part NO.	ZM060P02D
Marking	ZM060P02
Packing Information	REEL TAPE
Basic ordering unit (pcs)	2500

• Absolute Maximum Ratings ($T_c = 25^\circ C$)

Parameter	Symbol	Rating	Unit
Drain-Source Voltage	V_{DS}	-20	V
Gate-Source Voltage	V_{GS}	± 12	V
Continuous Drain Current	$I_D @ TC=25^\circ C$	-60	A
	$I_D @ TC=75^\circ C$	-45	A
	$I_D @ TC=100^\circ C$	-38	A
Pulsed Drain Current ^①	I_{DM}	-150	A
Total Power Dissipation ^②	P_D	60	W
Total Power Dissipation($T_A=25^\circ C$)	$P_D @ T_A=25^\circ C$	2.0	W
Operating Junction Temperature	T_J	-55 to 150	$^\circ C$
Storage Temperature	T_{STG}	-55 to 150	$^\circ C$
Single Pulse Avalanche Energy@L=0.1mH	E_{AS}	180	mJ
Avalanche Current@L=0.1mH	I_{AS}	-60	A

•Thermal resistance

Parameter	Symbol	Min.	Typ.	Max.	Unit
Thermal resistance, junction - case ^②	R _{thJC}	-	-	2.1	° C/W
Thermal resistance, junction - ambient	R _{thJA}	-	-	62.5	° C/W
Soldering temperature, wave soldering for 10s	T _{sold}	-	-	265	° C

•Electronic Characteristics

Parameter	Symbol	Condition	Min.	Typ	Max.	Unit
Drain-Source Breakdown Voltage	BV _{DSS}	V _{GS} =0V, I _D =-250uA	-20			V
Gate Threshold Voltage	V _{GS(TH)}	V _{GS} =V _{DS} , I _D =-250uA	-0.3	-0.6	-1.0	V
Drain-Source Leakage Current	I _{DSS}	V _{DS} =-20V, V _{GS} =0V			-1.0	uA
Gate- Source Leakage Current	I _{GSS}	V _{GS} =±12V, V _{DS} =0V			±100	nA
Static Drain-source On Resistance	R _{DS(ON)}	V _{GS} =-4.5V, I _D =-20A		7.0	9.0	mΩ
		V _{GS} =-2.5V, I _D =-10A		9.0	11.7	mΩ
Forward Transconductance	g _{FS}	V _{DS} =-10V, I _D =-5A		20		s
Source-drain voltage	V _{SD}	I _S =-20A		0.85	1.28	V

•Electronic Characteristics

Parameter	Symbol	Condition	Min.	Typ	Max.	Unit
Input capacitance	C _{iss}	V _{GS} =0V, V _{DS} =-15V f = 1MHz	-	5250	-	pF
Output capacitance	C _{oss}		-	410	-	
Reverse transfer capacitance	C _{rss}		-	340	-	

•Gate Charge characteristics(T_a = 25°C)

Parameter	Symbol	Condition	Min.	Typ	Max.	Unit
Total gate charge	Q _g	V _{DD} =-15V	-	116	-	nC
Gate - Source charge	Q _{gs}	I _D = -10A	-	7	-	
Gate - Drain charge	Q _{gd}	V _{GS} = -4.5V	-	20	-	

Note: ① Pulse Test : Pulse width ≤ 300μs, Duty cycle ≤ 2% ;

② Device mounted on FR-4 substrate PC board, 2oz copper, with thermal bias to bottom layer 1inch square copper plate;

Fig.1 Gate-Charge Characteristics

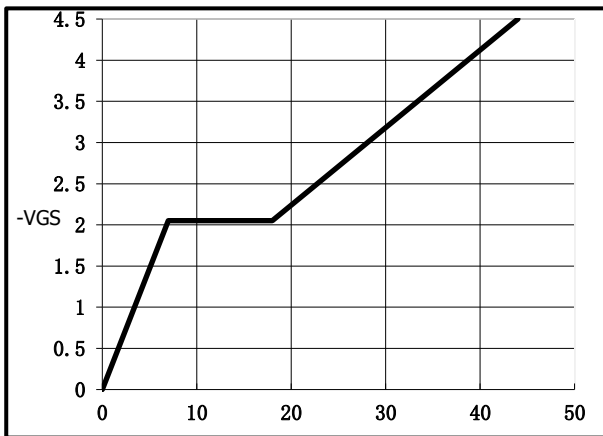


Fig.2 Capacitance Characteristics

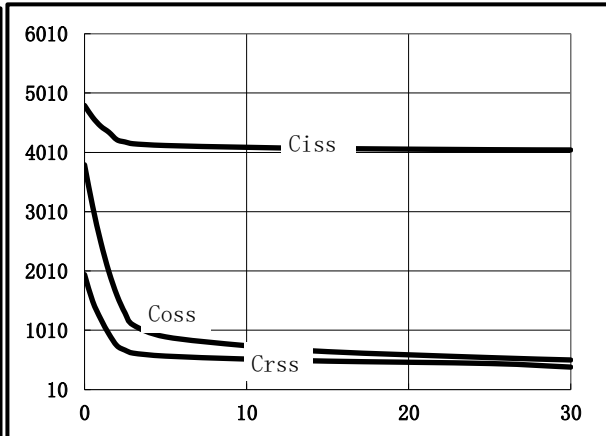


Fig.2 Power Dissipation

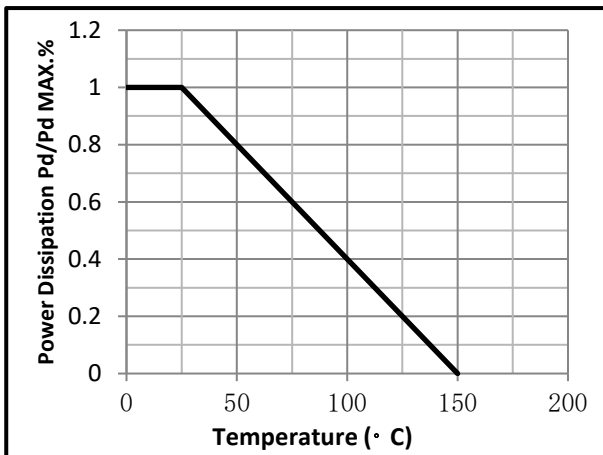


Fig.3 Typical output Characteristics

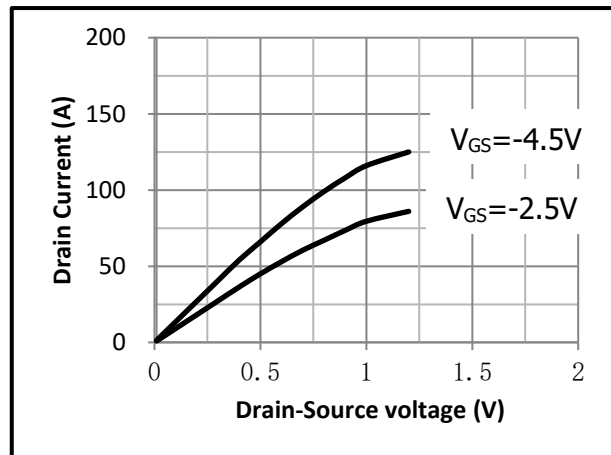


Fig.4 Threshold Voltage V.S Junction Temperature

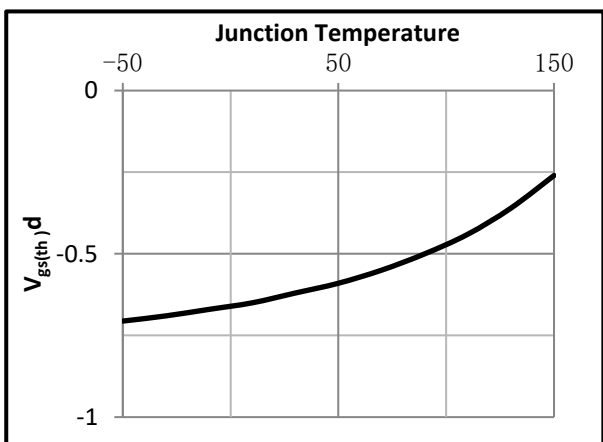


Fig.5 Resistance V.S Drain Current

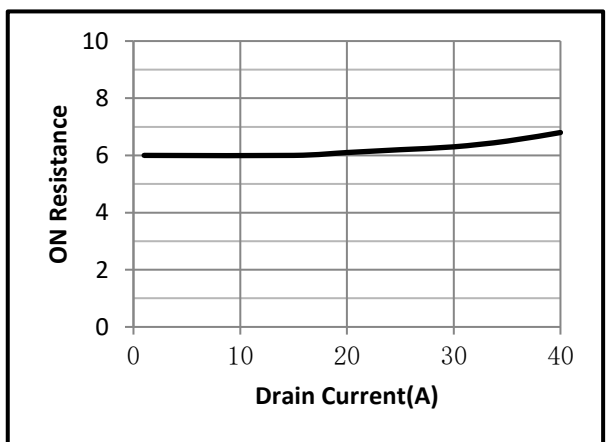


Fig.6 On-Resistance VS Gate Source Voltage

Fig.7 On-Resistance V.S Junction Temperature

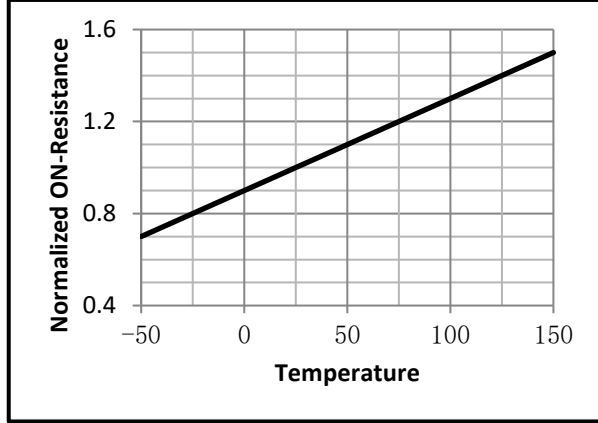
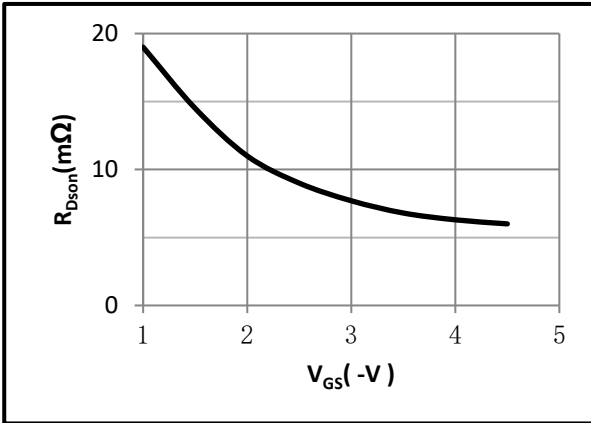


Fig.8 Switching Time Measurement Circuit

Fig.9 Gate Charge Waveform

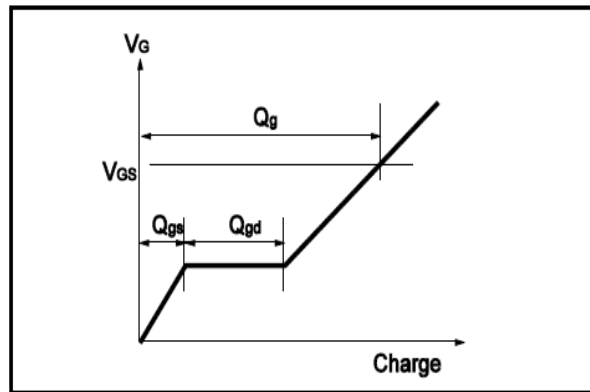
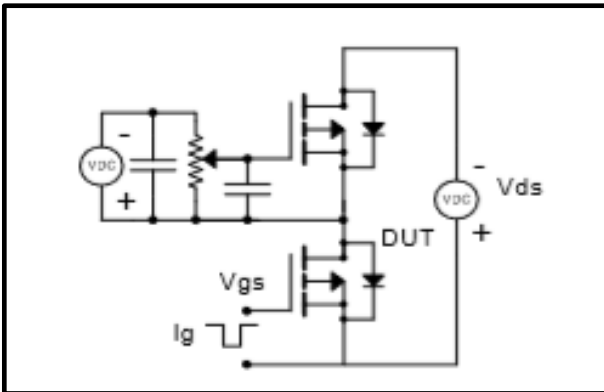
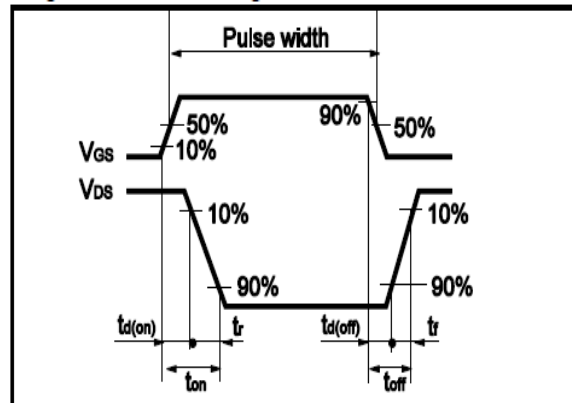
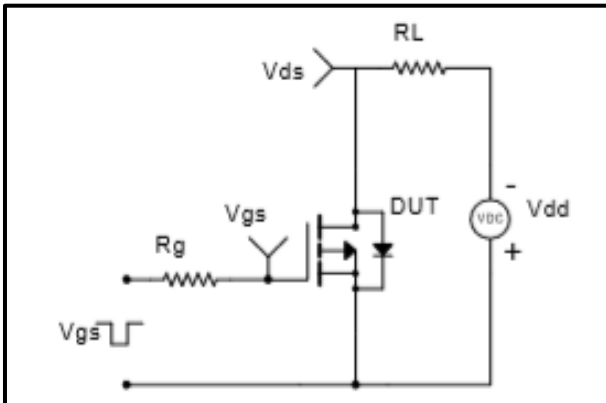


Fig.10 Switching Time Measurement Circuit

Fig.11 Gate Charge Waveform





•Dimensions(TO-252)

Unit: mm

SYMBOL	min	max	SYMBOL	min	max
A	2.10	2.50	B	0.85	1.25
b	0.50	0.80	b1	0.50	0.90
b2	0.45	0.70	C	0.45	0.70
D	6.30	6.75	D1	5.10	5.50
E	5.30	6.30	e1	2.25	2.35
L1	9.20	10.60	e2	4.45	4.75
L2	0.90	1.75	L3	0.60	1.10
K	0.00	0.23			

